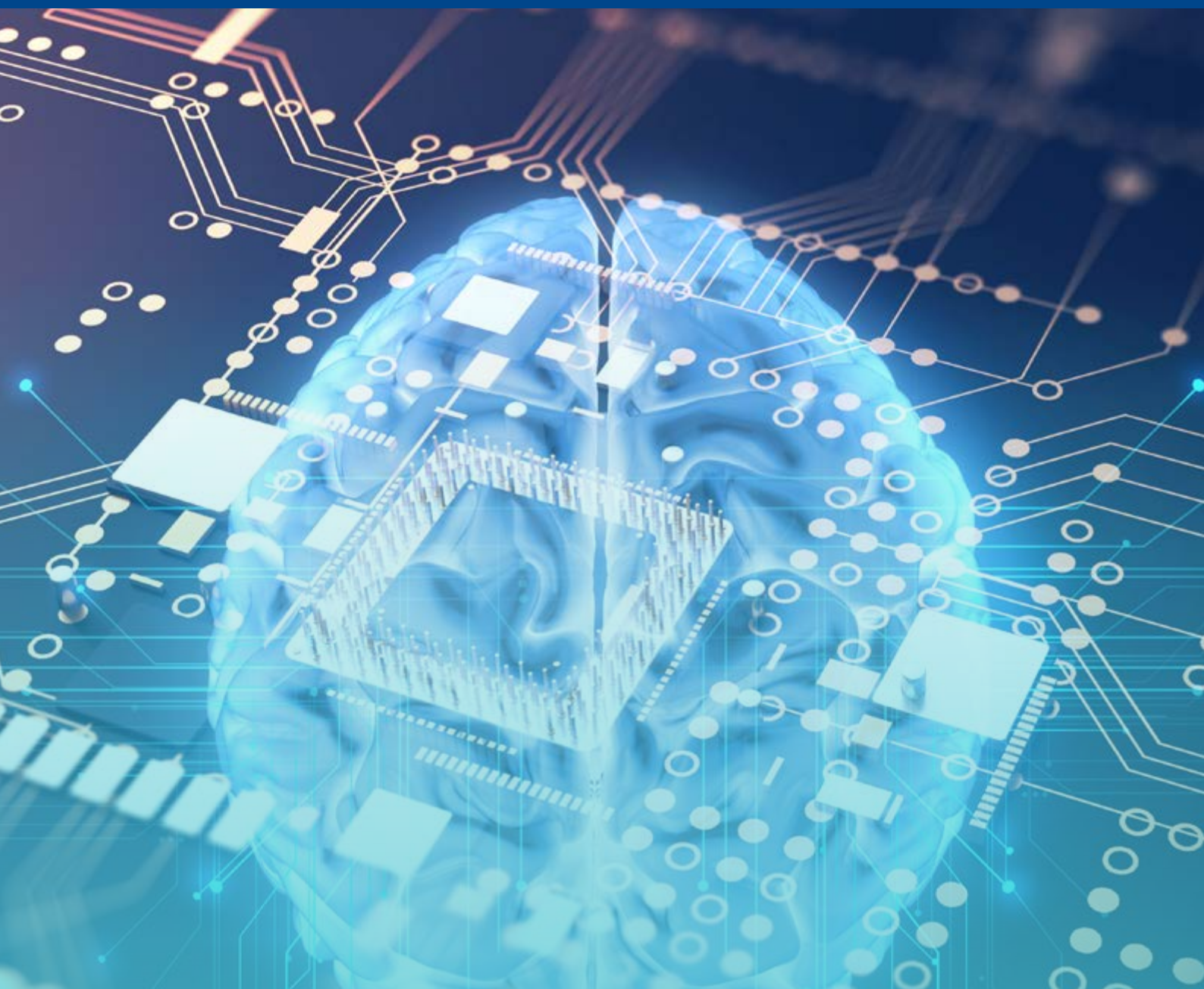




THE UNIVERSITY OF
MELBOURNE

Faculty of Medicine,
Dentistry and Health Sciences

Melbourne Medical School
The Department of Psychiatry



The Department of Psychiatry Annual Research Symposium

PSYCHIATRY IN THE DIGITAL ERA

Thursday, 16 August 2018 from 12 – 4.30 pm

Ian Potter Auditorium, Kenneth Myer Building
The University of Melbourne
Corner of Genetic Lane and Royal Parade, Parkville

Psychiatry in the Digital Era

Time	Item	Session Chair
11.45 am	Registration Lunch and Scientific Poster Session Foyer, Kenneth Myer Building	
1.00 pm	Introduction	Professor Bernhard Baune
1.10 pm	Keynote Speaker Scientia Professor Helen Christensen “Digital interventions for suicide prevention”	Professor Bernhard Baune
1.50 pm	Dr Peter Koval “Effects of moderated online social therapy on daily functioning of FEP carers” Ms Fiona Foley “Using digital technology to promote self-management and personal recovery in serious mental illness”	Professor David Castle
2.30 pm	Afternoon tea	
2.45 pm	Open Session Suriati Mohamed Saini Interaction effects of childhood adversity and glutamatergic polygenic risk score on brain structure and cognition in schizophrenia Carra Aven Simpson Healthy body, healthy mind... healthy mouth? – An investigation of oral bacteria, cortisol and C-reactive protein in adolescent depression and anxiety Sandra Luza Iron-mediated dysfunction in schizophrenia: A new and tractable pharmacological target Antonia Merritt A process of data transference: A case study based on the CRC Psychosis Study	Professor Meaghan O’Donnell
3.40 pm	NHMRC scheme changes, DRM recruitment, MRFF and other research updates with Professor Michael McGuckin, Associate Dean, (Research) FDMHS	Professor Nicola Lautenschlager
4.10 pm	Conclusion Presentation and Poster Awards	Professor Bernhard Baune
4.30 pm	Break before Alice Barber Public Lecture	
5.00 pm to 6.00 pm	Alice Barber Public Lecture <i>The Alice Barber Public Lecture is co-sponsored by the Department of Psychiatry and the Melbourne School of Psychological Sciences who organise the lecture in alternating years.</i> Professor Bernhard Baune presents: ‘Putting People First – a personalised approach to Mental Health’ Mental health illness has a significant impact on society. Almost half the population will experience a mental health condition in their lifetime. In the past decade, we have seen an explosion of interest in mental health illness and wellbeing—from the media, to individuals, to workplaces, to government action. In Australia and worldwide we are seeing a shift towards prevention and early intervention. The ‘wait and see’ and ‘one size fits all’ approaches are being left behind and instead, we are moving towards a view to personalised psychiatry. In his public lecture, Professor Baune will introduce the concept of personalised psychiatry and how it puts the individual first in both research and clinical practice. Professor Baune is leading this exciting research internationally. He will use examples of research and clinical applications to discuss the underlying principles of personalised psychiatry and why it is so important to the future of mental health illness.	Professor Jane Gunn

Participants



Professor Bernhard Baune (PhD, MD, MPH, FRANZCP) is Professor of Psychiatry and the incoming Cato Chair, Head of the Department of Psychiatry at The University of Melbourne. His research is motivated by innovation, discovery, and translation. He leads international genomics consortia in Psychiatry and directs an internationally recognised research program into Personalised Psychiatry, Molecular Psychiatry and Neuroimmunology. The integrated research from his Psychiatric Prediction and Genomics Centre and the Personalised Clinical Treatment Program aims to translate biological research findings into innovative clinical trials and real-world clinical outcomes. The basic science and clinical research is communicated in >450 publications including in Science, NEJM, JAMA, Lancet, Nature Genetics and Mol Psychiatry.



Scientia Professor Helen Christensen is Director and Chief Scientist at the Black Dog Institute and a Professor of Mental Health at UNSW. She is one of only two National Health and Medical Research Council (NHMRC) John Cade Research Fellows and Chief Investigator for the NHMRC Centre for Research Excellence in Suicide Prevention (CRESP). Professor Christensen is an international leader in the use of technology to deliver evidence-based psychological therapies to communities and individuals who suffer from anxiety or depression, or who are at risk of suicide. She leads the Digital Dog team that is investigating novel methods for detecting mental health risk via social media, and developing novel interventions for mental health treatment. The Digital Dog team focuses on interventions to target depression, suicide risk and to enhance wellbeing.



Professor David Castle is Professor of Psychiatry at St Vincent's Health and The University of Melbourne. He has wide clinical and research interests, encompassing schizophrenia and related disorders, bipolar disorder, cannabis abuse, OCD spectrum disorders and disorders of body image. He has published over 700 papers and chapters; and 23 books. His broader interests include music, literature, theatre and art.



Professor Nicola Lautenschlager is the Professor of Psychiatry of Old Age and Director of the Academic Unit for Psychiatry of Old Age, Department of Psychiatry at The University of Melbourne. She is also a Consultant Old Age Psychiatrist and Director of Research in the Aged Persons Mental Health Program of NorthWestern Mental Health, Melbourne Health. In 2018 she was appointed Director of Research and Research Training for the Melbourne Medical School. She has a special interest in dementia risk reduction and leads The University of Melbourne site of the NHMRC Centre of Excellence in Cognitive Health.



Professor Meaghan O'Donnell is the Head of Research at Phoenix Australia, Centre for Posttraumatic Mental Health, in the Department of Psychiatry, The University of Melbourne. She has over 100 peer review publications in the area of posttraumatic mental health and has a keen interest in posttraumatic phenomenology and early intervention following trauma exposure. She is the Immediate Past President of the International Society of Traumatic Stress Studies and is a recipient of the prestigious Experienced Researcher Humboldt Fellowship. She is on the editorial board for the European Journal of Traumatic Stress Studies.




Fiona Foley is the Acting Director of the National e-Therapy Centre at Swinburne University of Technology. She has successfully project managed the development and trialling of two large interventions using online resources in serious mental illness; the SMART Research Program looking at promoting recovery and self-management for people who experience psychosis and the ORBIT Research Program looking at the promotion of quality of life in people with late-stage bipolar disorder.



Dr Peter Koval completed a PhD in Psychology at the University of Leuven (Belgium) in 2014 and then returned to Australia for a postdoctoral fellowship at Australian Catholic University from 2014-2017. He is a lecturer at the Melbourne School of Psychological Sciences at The University of Melbourne. His research lies at the intersection of social, personality and clinical psychology with a focus on individual differences in daily emotional functioning captured using ecological momentary assessment (EMA).

Contact us

Professor Bernhard Baune
Cato Chair
Head of Department of Psychiatry
The University of Melbourne

 +61 3 8344 5509

 psych-adm@unimelb.edu.au

 psychiatry.unimelb.edu.au
