



THE UNIVERSITY OF
MELBOURNE

Department of
Psychiatry

Master of Psychiatry

(Online)

Learn from the best minds in psychiatry to complete your formal training and embark on a successful career

About the course

With the need to improve psychiatric care to a broader cross section of the community, the Master of Psychiatry connects you to develop advanced knowledge and skills required to provide quality care to the range of people experiencing mental illness.


Delivered by the Department of Psychiatry, you will learn from and be mentored by global thought leaders in psychiatric practice and research. You will gain cutting-edge knowledge and skills that will enable you to provide outstanding clinical care to patients while you embark on a successful career in psychiatry.

As well as gaining a comprehensive understanding of the core principles and specialties of psychiatry, you will explore the latest theoretical concepts and insights and learn how to apply these in your clinical practice. You will also develop a broad understanding of the sociocultural, geographical region, and their relationship to individuals and mental illness.


Who is this course for?

This course is for training psychiatrists undergoing the RANZCP Fellowship Program looking to satisfy the formal education course requirements, as well as for practising medical practitioners wishing to advance their knowledge, skills and career in psychiatry.


The course is fully accredited by the requirements applicable to all psychiatric trainees for their Fellowship examinations.



Study part-time online

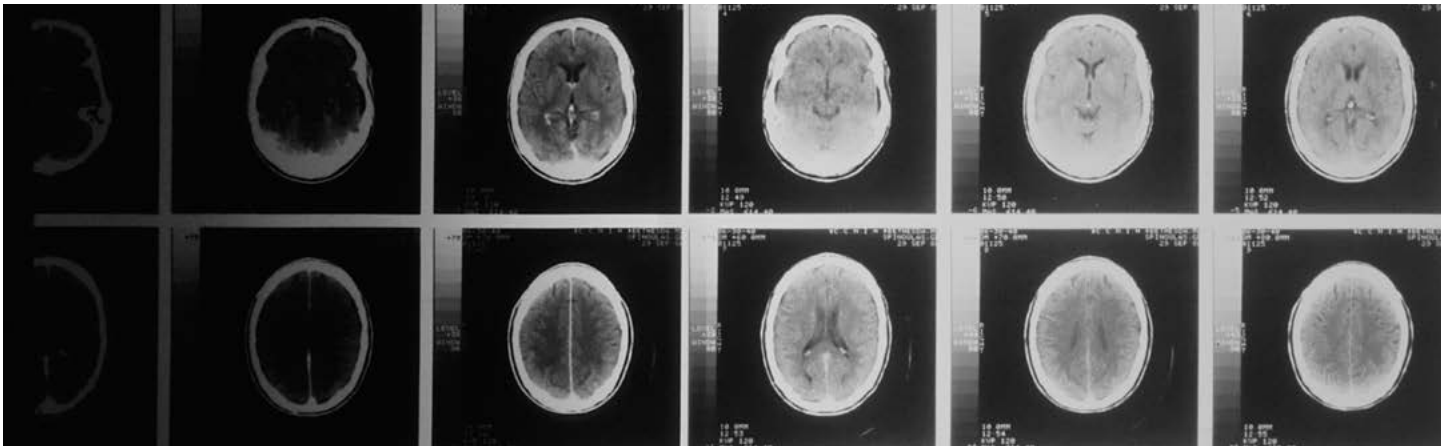


Gain a competitive advantage



Learn from global experts





What will I learn?

On successful completion of this course, you will have a sound understanding of:

- Evidence-based aetiology, diagnosis, formulation, assessment, management and prognosis for the major categories of psychiatric disorder
- The evolution of human behaviour through the life cycle from a developmental perspective, and the relationship between physical and psychological health and illness.

Entry requirements

The entry requirements for the course can be found online at: study.unimelb.edu.au/find/courses/graduate/master-of-psychiatry-online/entry-requirements/

Qualification as a psychiatrist in Australia is obtained through application and completion of a training program with the Royal Australian and New Zealand College of Psychiatrists - www.ranzcp.org

Need more information?

Please contact our Student Support team via:

Phone: +61 3 8344 0149

Email: continuing-education@unimelb.edu.au

Contact hours

Monday to Friday: 8am - 7pm

Saturday: 9am - 7pm

Course structure

The course offers flexible delivery:

Subject	Duration	Fees	Intake	Applications close	Commencing
Master of Psychiatry (Online)	Three years part-time	\$38,026*	Summer intake 2025	6 January 2025	End of January 2025
			Winter intake 2025	2 June 2025	End of June 2025

Fees are indicative and paid on a per-module basis. The total course fees are not required to be paid up-front. Fee Help is available.

*<https://study.unimelb.edu.au/find/courses/graduate/master-of-psychiatry-online/>

Master of Psychiatry (MC-PO) Course Structure

Year	Core Subjects	Elective Subjects
Year 1	PSYT90078 Core Psychiatry I January to June (18 Weeks) 25 CP	PSYT90079 Core Psychiatry II June to October (18 Weeks) 25 CP
Year 2	PSYT90006 Child and Adolescent Psychiatry January to April (12 Weeks) 18.75 CP	Elective 1 April to June (6 weeks) 6.25 CP Elective 2 June to August (6 weeks) 6.25 CP PSYT90024 Consultation Liaison Psychiatry August to November (12 Weeks) 18.75 CP
Year 3	PSYT90004 Psychiatry of Old Age January to April (12 weeks) 18.75 CP	Elective 1 April to June (6 weeks) 6.25 CP Elective 2 June to August (6 weeks) 6.25 CP PSYT90094 Special Topics in Psychiatry August to November (12 weeks) 18.75 CP OR PSYT90093 Psychiatric Research Project [^] August to November (12 Weeks) 18.75 CP

Core subjects Elective subjects

[^]Must complete PSYT90010 Research Methods in Psychiatry as a prerequisite

*Prerequisite for PSYT90093 Psychiatric Research Project

CP = Credit Points (150 CP total)

For more detailed subject information, please refer to the [University of Melbourne Handbook](#)

ELECTIVE I Options (Semester 1)

PSYT90022 Cognitive Behaviour Therapy
 PSYT90059 Substance Use Disorders
 PSYT90016 Forensic Psychiatry
 PSYT90088 History and Philosophy in Psychiatry

ELECTIVE II Options (Semester 2)

PSYT90090 Psychodynamic Therapy in Psychiatry
 PSYT90014 Transcultural Mental Health
 PSYT90061 Psychopharmacology
 PSYT90010 Research Methods in Psychiatry*
 PSYT90023 Ethics in Psychiatry