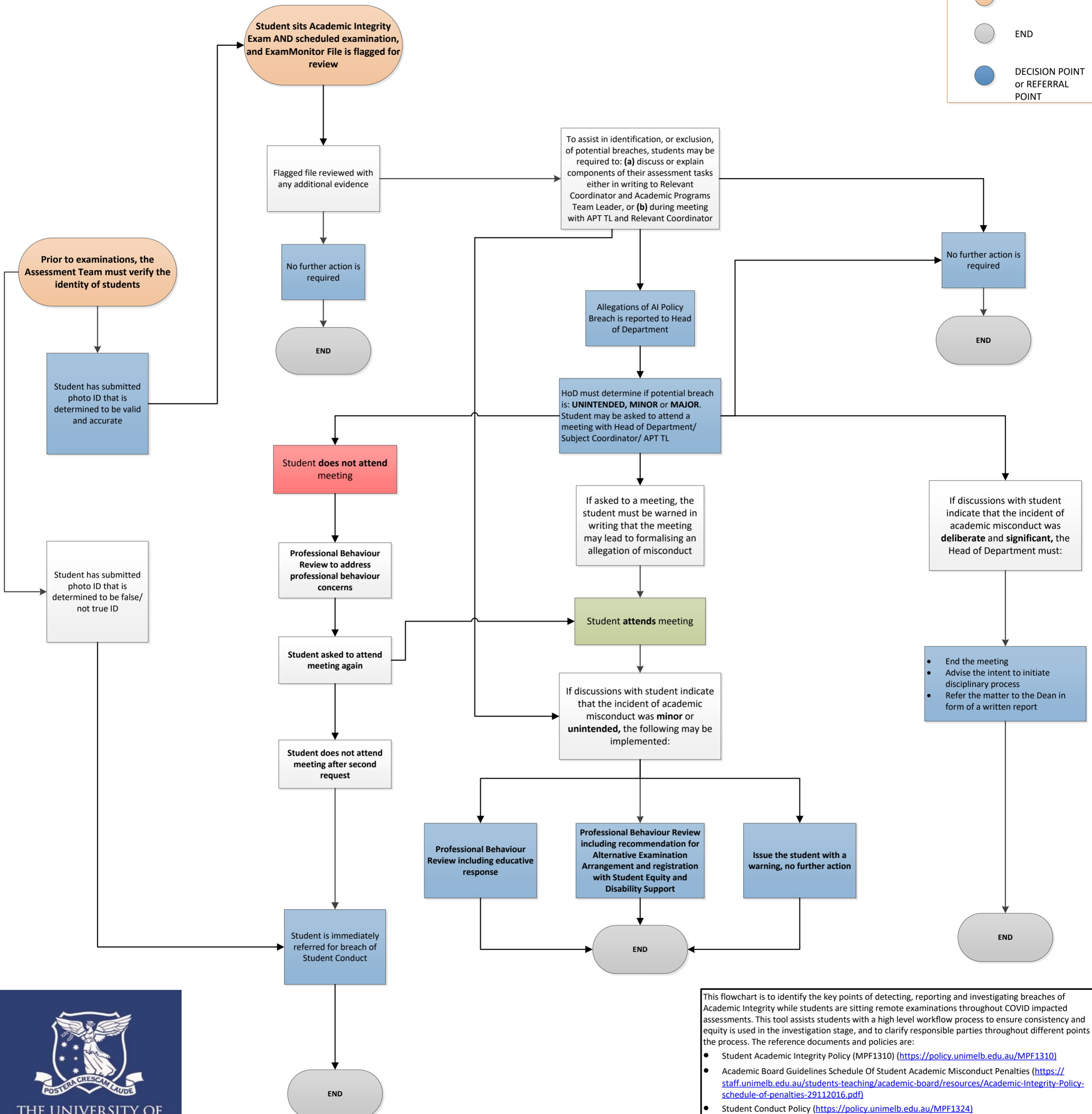
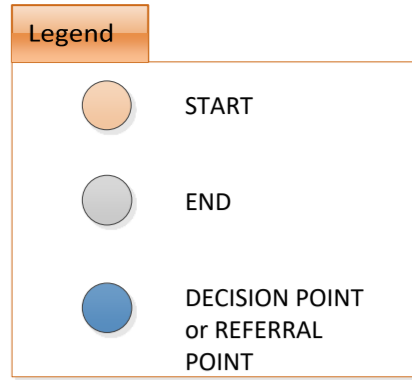


Melbourne Medical School – Academic Integrity for Online Exams



This flowchart is to identify the key points of detecting, reporting and investigating breaches of Academic Integrity while students are sitting remote examinations throughout COVID impacted assessments. This tool assists students with a high level workflow process to ensure consistency and equity is used in the investigation stage, and to clarify responsible parties throughout different points of the process. The reference documents and policies are:

- Student Academic Integrity Policy (MPF1310) (<https://policy.unimelb.edu.au/MPF1310>)
- Academic Board Guidelines Schedule Of Student Academic Misconduct Penalties (<https://staff.unimelb.edu.au/students-teaching/academic-board/resources/Academic-Integrity-Policy-schedule-of-penalties-29112016.pdf>)
- Student Conduct Policy (<https://policy.unimelb.edu.au/MPF1324>)

Please note that at any faculty members mentioned in the flowchart may use a delegate in their place. When the investigation process concludes all outcomes are monitored, and recorded securely by Academic Programs Team.